

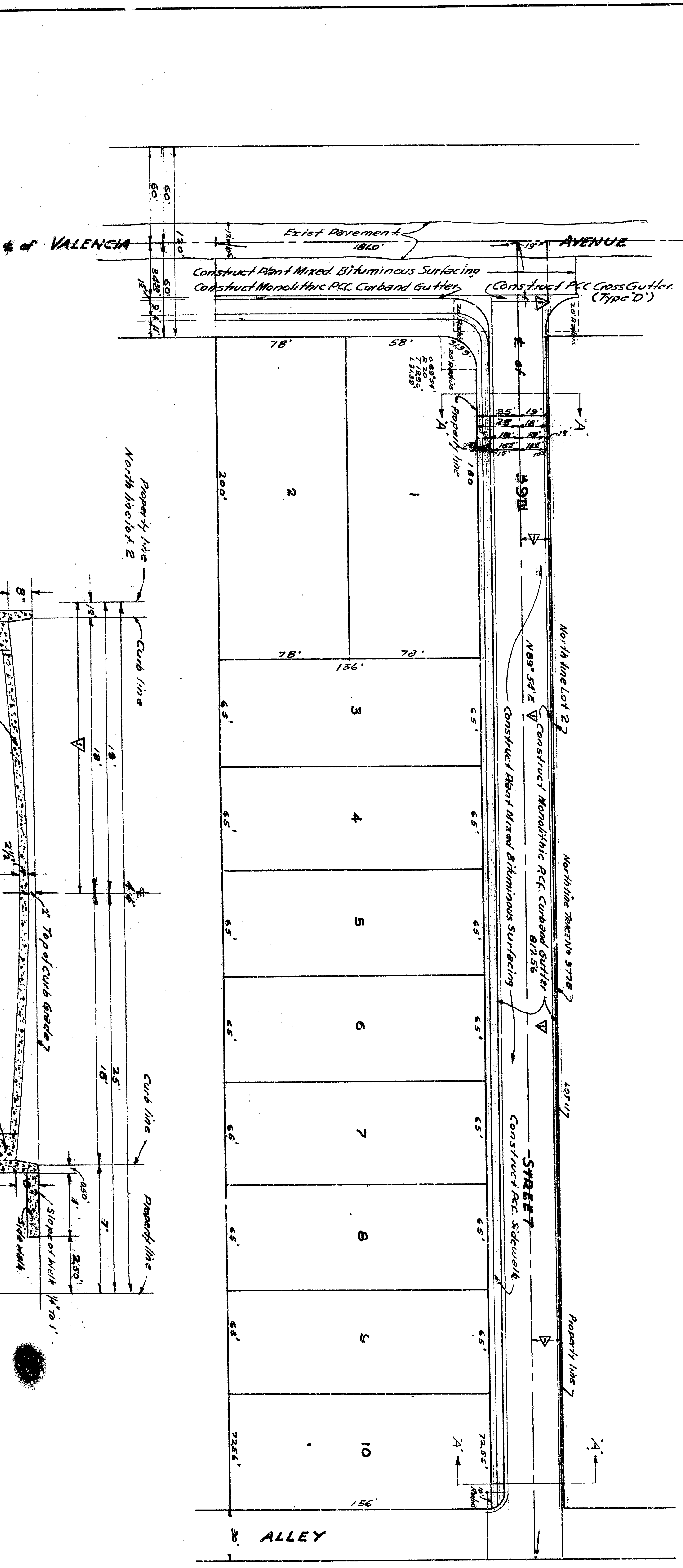
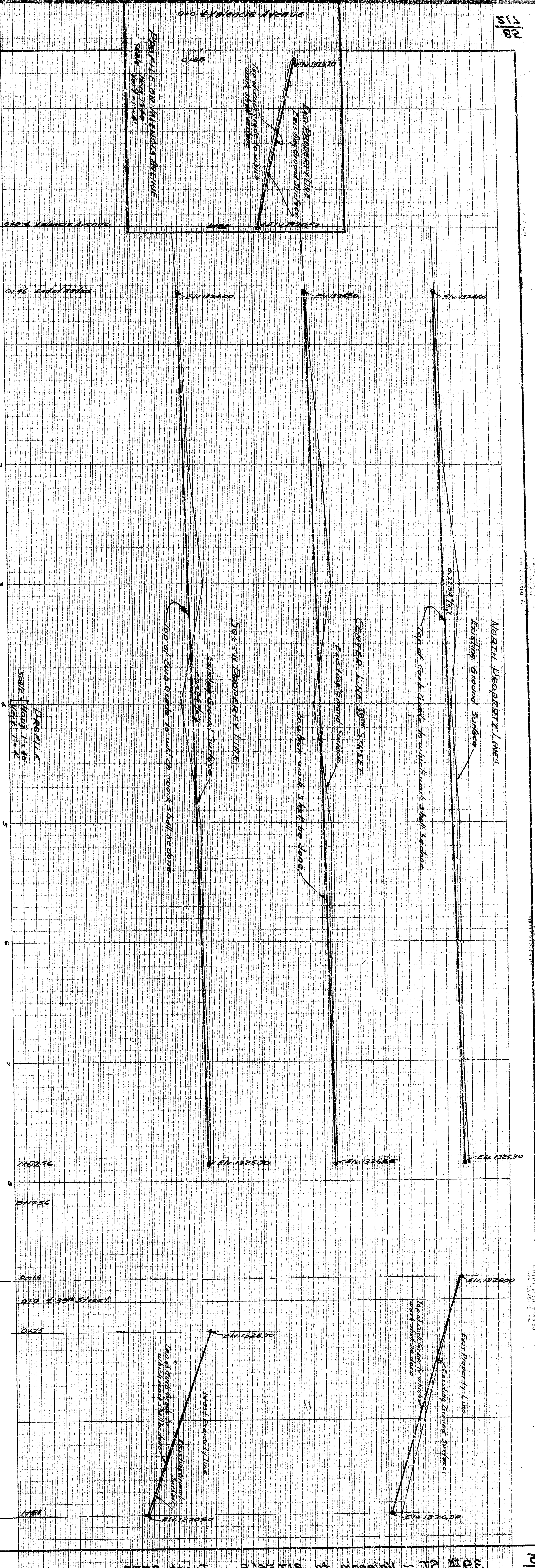
Change Approved by Planning Commission  
 2-24-27  
 City Engineer  
 REGISTERED CIVIL ENGINEER NO. 10245

DEPARTMENT OF ENGINEERING  
 CITY OF SAN BERNARDINO  
 IMPROVEMENT ON 39th STREET BETWEEN  
 VALENCIA AVENUE TO 39th STREET EAST.

PLAN TRACT NO. 3778  
 Scale 1" = 40'

Reference  
 SUBMITTED BY: C. E. Johnson  
 APPROVED: [Signature] 11, 1933  
 CITY ENGINEER  
 CHECKED BY: [Signature]  
 DRAWING NO. 2084  
 SHEET 1 OF 2 SHEETS

All elevations shown are in feet and are above a plane which is 1045.28 feet below the City Bench Mark established by Ordinance No. 385 of the City of San Bernardino. All work embodied on these plans shall be done in conformity with applicable provisions of Specification No. 2022.



PLAN TRACT NO. 3778  
Scale 1/4" = 40'

DEPARTMENT OF ENGINEERING  
CITY OF SAN BERNARDINO  
IMPROVEMENT ON 39th STREET BETWEEN  
VALENCIA AVENUE TO 6th ST. EAST.

Submitted by: C. E. Johnson  
Approved: [Signature]  
Checked by: [Signature]

Change Approved by Planning Commission  
3-21-77  
39th STREET to be improved.

REGISTERED CIVIL ENGINEER NO. 10265

NOTE: All elevations shown are in feet and are above a plane which is 1045.28 feet below the City Bench Mark established by Ordinance No. 385 of the City of San Bernardino. All work embodied on these plans shall be done in conformity with applicable provisions of Specification No. 2022.